



# MEMBERSHIP CERTIFICATE

This is to certify that  
**KERSHAW MECHANICAL SERVICES  
LTD**  
is a member of the

## **BUILDING ENGINEERING SERVICES ASSOCIATION**

BESA membership provides independent assessment and verification of the above named company's technical competence, commercial capability and adherence to health and safety best practice.

MEMBERSHIP NUMBER      F059600/HV000428

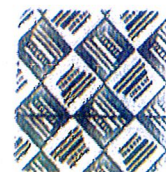
MEMBER SINCE              1955

VALID UNTIL                 31st March 2019

BESA PRESIDENT

A handwritten signature in black ink, appearing to read 'Tim Hopkinson', is written over a circular stamp or watermark.

Tim Hopkinson



00000284